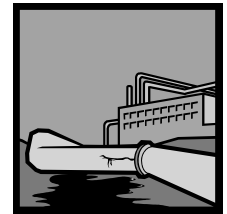


Name: _____



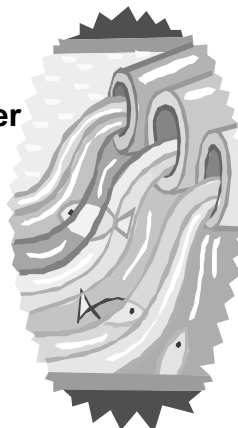
Which type of water?

Task 1: Answer the following questions about the different types of water.

	wastewater	stormwater	river water	sea water	tap water
Where does it come from?					
What is in it?					
Where is it found?					
How is it Used?					

Task 2: Create a mind map using the following words.....

- wastewater stormwater
- water rain toilet
- taps pollution sea water
- tap water river water
- clouds sea salt
- reservoir dam drains
- run-off water pipes



Task 3:

Water travels along rivers, through pipes into your home, down the sink to the wastewater plant and eventually into the sea. Rain that falls onto a hill may take many different pathways before entering the sea. Imagine you are a drop of water falling in the Onkaparinga Catchment in the Adelaide hills. What happens to you as you flow towards the sea? **Draw a poster, write a story, poem or song, or make up a play** showing what happens to you on your journey.

Add any other words you think of.